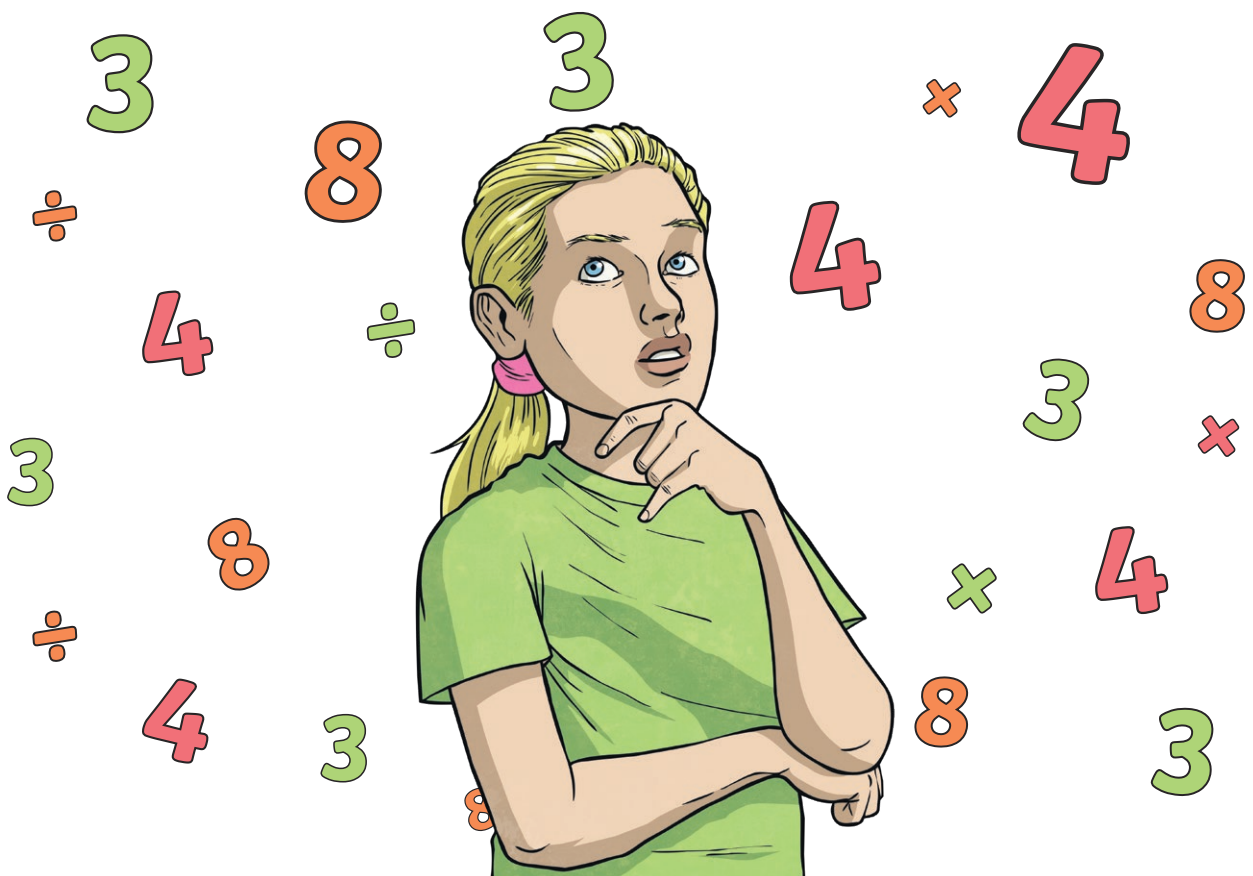


Ultimate Times Table Daily Practice Booklet 9



Name: _____

Day 1 Challenge

$1 \times 3 =$	$2 \times 3 =$	$3 \times 3 =$
$4 \times 3 =$	$5 \times 3 =$	$6 \times 3 =$
$7 \times 3 =$	$8 \times 3 =$	$9 \times 3 =$
$10 \times 3 =$	$11 \times 3 =$	$12 \times 3 =$
$1 \times 4 =$	$2 \times 4 =$	$3 \times 4 =$
$4 \times 4 =$	$5 \times 4 =$	$6 \times 4 =$
$7 \times 4 =$	$8 \times 4 =$	$9 \times 4 =$
$10 \times 4 =$	$11 \times 4 =$	$12 \times 4 =$

My score:

24

Day 2 Challenge

$1 \times 4 =$	$2 \times 4 =$	$3 \times 4 =$
$4 \times 4 =$	$5 \times 4 =$	$6 \times 4 =$
$7 \times 4 =$	$8 \times 4 =$	$9 \times 4 =$
$10 \times 4 =$	$11 \times 4 =$	$12 \times 4 =$
$1 \times 8 =$	$2 \times 8 =$	$3 \times 8 =$
$4 \times 8 =$	$5 \times 8 =$	$6 \times 8 =$
$7 \times 8 =$	$8 \times 8 =$	$9 \times 8 =$
$10 \times 8 =$	$11 \times 8 =$	$12 \times 8 =$

My score:

24

Day 3 Challenge

$1 \times 3 =$	$2 \times 3 =$	$3 \times 3 =$
$4 \times 3 =$	$5 \times 3 =$	$6 \times 3 =$
$7 \times 3 =$	$8 \times 3 =$	$9 \times 3 =$
$10 \times 3 =$	$11 \times 3 =$	$12 \times 3 =$
$1 \times 4 =$	$2 \times 4 =$	$3 \times 4 =$
$4 \times 4 =$	$5 \times 4 =$	$6 \times 4 =$
$7 \times 4 =$	$8 \times 4 =$	$9 \times 4 =$
$10 \times 4 =$	$11 \times 4 =$	$12 \times 4 =$

My score:

24

Day 4 Challenge

$1 \times 4 =$	$2 \times 4 =$	$3 \times 4 =$
$4 \times 4 =$	$5 \times 4 =$	$6 \times 4 =$
$7 \times 4 =$	$8 \times 4 =$	$9 \times 4 =$
$10 \times 4 =$	$11 \times 4 =$	$12 \times 4 =$
$1 \times 8 =$	$2 \times 8 =$	$3 \times 8 =$
$4 \times 8 =$	$5 \times 8 =$	$6 \times 8 =$
$7 \times 8 =$	$8 \times 8 =$	$9 \times 8 =$
$10 \times 8 =$	$11 \times 8 =$	$12 \times 8 =$

My score:

24

Day 5 Challenge

$1 \times 3 =$	$2 \times 3 =$	$3 \times 3 =$
$4 \times 3 =$	$5 \times 3 =$	$6 \times 3 =$
$7 \times 3 =$	$8 \times 3 =$	$9 \times 3 =$
$10 \times 3 =$	$11 \times 3 =$	$12 \times 3 =$
$1 \times 8 =$	$2 \times 8 =$	$3 \times 8 =$
$4 \times 8 =$	$5 \times 8 =$	$6 \times 8 =$
$7 \times 8 =$	$8 \times 8 =$	$9 \times 8 =$
$10 \times 8 =$	$11 \times 8 =$	$12 \times 8 =$

My score:

24

Day 1 Challenge - Answers

$1 \times 3 = 3$	$2 \times 3 = 6$	$3 \times 3 = 9$
$4 \times 3 = 12$	$5 \times 3 = 15$	$6 \times 3 = 18$
$7 \times 3 = 21$	$8 \times 3 = 24$	$9 \times 3 = 27$
$10 \times 3 = 30$	$11 \times 3 = 33$	$12 \times 3 = 36$
$1 \times 4 = 4$	$2 \times 4 = 8$	$3 \times 4 = 12$
$4 \times 4 = 16$	$5 \times 4 = 20$	$6 \times 4 = 24$
$7 \times 4 = 28$	$8 \times 4 = 32$	$9 \times 4 = 36$
$10 \times 4 = 40$	$11 \times 4 = 44$	$12 \times 4 = 48$

Day 2 Challenge - Answers

$1 \times 4 = 4$	$2 \times 4 = 8$	$3 \times 4 = 12$
$4 \times 4 = 16$	$5 \times 4 = 20$	$6 \times 4 = 24$
$7 \times 4 = 28$	$8 \times 4 = 32$	$9 \times 4 = 36$
$10 \times 4 = 40$	$11 \times 4 = 44$	$12 \times 4 = 48$
$1 \times 8 = 8$	$2 \times 8 = 16$	$3 \times 8 = 24$
$4 \times 8 = 32$	$5 \times 8 = 40$	$6 \times 8 = 48$
$7 \times 8 = 56$	$8 \times 8 = 64$	$9 \times 8 = 72$
$10 \times 8 = 80$	$11 \times 8 = 88$	$12 \times 8 = 96$

Day 3 Challenge - Answers

$1 \times 3 = 3$	$2 \times 3 = 6$	$3 \times 3 = 9$
$4 \times 3 = 12$	$5 \times 3 = 15$	$6 \times 3 = 18$
$7 \times 3 = 21$	$8 \times 3 = 24$	$9 \times 3 = 27$
$10 \times 3 = 30$	$11 \times 3 = 33$	$12 \times 3 = 36$
$1 \times 4 = 4$	$2 \times 4 = 8$	$3 \times 4 = 12$
$4 \times 4 = 16$	$5 \times 4 = 20$	$6 \times 4 = 24$
$7 \times 4 = 28$	$8 \times 4 = 32$	$9 \times 4 = 36$
$10 \times 4 = 40$	$11 \times 4 = 44$	$12 \times 4 = 48$

Day 4 Challenge - Answers

$1 \times 4 = 4$	$2 \times 4 = 8$	$3 \times 4 = 12$
$4 \times 4 = 16$	$5 \times 4 = 20$	$6 \times 4 = 24$
$7 \times 4 = 28$	$8 \times 4 = 32$	$9 \times 4 = 36$
$10 \times 4 = 40$	$11 \times 4 = 44$	$12 \times 4 = 48$
$1 \times 8 = 8$	$2 \times 8 = 16$	$3 \times 8 = 24$
$4 \times 8 = 32$	$5 \times 8 = 40$	$6 \times 8 = 48$
$7 \times 8 = 56$	$8 \times 8 = 64$	$9 \times 8 = 72$
$10 \times 8 = 80$	$11 \times 8 = 88$	$12 \times 8 = 96$

Day 5 Challenge - Answers

$1 \times 3 = 3$	$2 \times 3 = 6$	$3 \times 3 = 9$
$4 \times 3 = 12$	$5 \times 3 = 15$	$6 \times 3 = 18$
$7 \times 3 = 21$	$8 \times 3 = 24$	$9 \times 3 = 27$
$10 \times 3 = 30$	$11 \times 3 = 33$	$12 \times 3 = 36$
$1 \times 8 = 8$	$2 \times 8 = 16$	$3 \times 8 = 24$
$4 \times 8 = 32$	$5 \times 8 = 40$	$6 \times 8 = 48$
$7 \times 8 = 56$	$8 \times 8 = 64$	$9 \times 8 = 72$
$10 \times 8 = 80$	$11 \times 8 = 88$	$12 \times 8 = 96$