

## Sporle Newsletter for week ending 16th January 2026

The Nar Valley Federation of Church Academies

Executive Headteacher: Mrs Anne Neary  
Web: [www.narvalleyfederation.co.uk](http://www.narvalleyfederation.co.uk)

### Dear Parents and carers,

Thank you for a lovely week here at Sporle. It is hard to believe it's already the middle of January but what a fantastic start to 2026 it has been! A small reminder that children must bring a named pair of wellies with them if they want to be enjoying the grass area over the winter period. Thank you to those who have been bringing them in so far. The children have really impressed us with their super learning this week. In Kingfishers they have enjoyed learning about Beowulf. In Woodpeckers they've enjoyed learning about the first trains and in Robins they have been learning about the Great Fire Of London.

### Upcoming Events

See Diary Dates for details.....

**Active Kids Festival** at Lynnsport - Monday 19<sup>th</sup> January

#### **Benedictine Project Day**

Year 5 pupils from Castle Acre and Sporle will go to join Narborough Year 5's Thank you to our FOSS for paying for this coach.

**Kingfishers Class Trip to West Stow** - Friday 13<sup>th</sup> February

Last day of Spring 1 term - Friday 13<sup>th</sup> February

First day of Spring 2 term - Monday 23<sup>rd</sup> February

**Tag Rugby** at The Nicholas Hamond Academy - Wednesday 25<sup>th</sup> March

### Reminders and Information.....

#### Driving

Could we also ask you to ensure that you take extra care to drive slowly and carefully around school; there have been some near misses lately and we don't want anyone hurt. We also don't want anyone getting cross with each other, so if there are any issues, please just let us know in school, thank you.

May we also remind you that the carpark is for STAFF and BLUE BADGE holders ONLY.

#### **If your child is attending Active Kids on Monday 19<sup>th</sup> January:**

They will need to come into school in their PE kit, trainers not football boots, and a water bottle (no glass please) and a snack. Please also ensure your child brings a waterproof coat in case of wet weather. The coach leaves promptly at 8:45am.



#### Wellies or outdoor shoes

Please ensure your child has a pair of wellies (preferable) or suitable waterproof outdoor shoes in school. Also, a waterproof, warm coat for outdoor play.

#### Start of school day

A gentle reminder our school day begins at 8:40. Please ensure your child arrives in school from 8:30 and goes straight through to the classroom ready to start at 8:40. Please avoid coming through the front entrance unless it is after registration and you need to sign them in.

#### **Military Families.....**

Military Club with Mrs Jary is every Thursday lunchtime in person at Narborough, but children from Sporle and Castle Acre are also going to be able to access this online in coming weeks. Come along, eat your lunch, bring a friend and chat! In future we will be 'meeting' online with our other service children at Castle Acre and Sporle. We're proud of our Service personnel and proud to support our service families. We have strong links with the RAF base and look forward to our involvement in events.

### Attendance Awards.....

Class	%
Robins	94.35
Woodpeckers	95.54
Kingfishers	93.86

Oh dear, not quite this week :-)

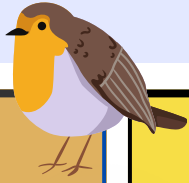




# AWARDS

The Nar Valley Federation of Church Academies

Executive Headteacher: Mrs Anne Neary  
Web: [www.narvalleyfederation.co.uk](http://www.narvalleyfederation.co.uk)



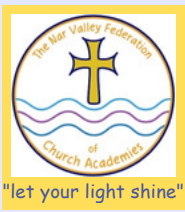
**Robins Class**

Award	Goes to...	For.....
Reader of the week	Nelly	For super reading in front of the class
Writer of the week	Archer	For a brilliant effort writing past tense verbs.
Mathematician of the week		None this week.
Shining Light		None this week.
Letting your light shine	Paddy	Super drawing club writing all week.

## Our week in Class



This week we have had a super week. We have really enjoyed learning about the Great fire of London, this week we looked at the differences in fire safety then and now. In science we have looked at the parts of a tree, we created a collage and then labelled the different parts of our tree. In Maths year 1 have been learning their number pairs to 20 and reception have been subitising numbers using dice patterns.



# AWARDS

The Nar Valley Federation of Church Academies



Woodpeckers Class

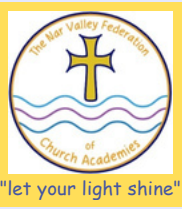
Award	Goes to...	For.....
Reader of the week	Adaline	reading with expression 
Writer of the week	Vinnie	for super handwriting and working hard
Mathematician of the week	Aadi	for super fraction work 
Shining Light	Alfie	for always trying his best every day

## Our week in Class



We've had a great week in Woodpecker class. The children have enjoyed learning about the early railways and the invention of the first train. We have enjoyed reading the story Tom's Midnight Garden in English. We looked at how it creates suspense. In maths we looked at counting fractions.

Continued on next page.....



# AWARDS

The Nar Valley Federation of Church Academies



Award	Goes to...	For.....
Reader of the Week	Jamie	Super responses to our reading about Beowulf
Writer of the Week	Skye	Coming up with lots of good ideas in shared writing
Mathematician of the Week	Pollyanna	Excellent use of multiplication methods
Shining Light	Teddy	Always trying hard with his learning

## Our week in Class

This week in Kingfisher class we have continued to read different versions of Beowulf, including the BBC version and the version by the great children's author Anthony Horowitz. In maths, we have been working upon multiplication methods and in history we have considered what life was like in Britannia in the 4<sup>th</sup> century. In art, the children have started to look at Medieval illuminated letters. Great learning everyone!



# Sporle Newsletter for week ending 16th January 2026

The Nar Valley Federation of Church Academies  
Executive Headteacher: Mrs Anne Neary



## Safeguarding

### Roblox tips:

There is no fixed minimum age to play Roblox, and children often share games and social spaces with much older users. This mix of ages, combined with user-generated content and social features such as chat and voice chat, means children's experiences can vary widely.

### Things to check:

- What games are they accessing, and are they age-appropriate?
- Is chat enabled, and who can message them? Have they come across anything violent, hateful or worrying? Are they using private servers or public spaces?
- Are parental controls or age settings in place and actively used?
- Do you as a parent feel confident managing the platform?
- What helps most in practice includes:
  - Regular, interested conversations about what children enjoy playing, who they play with, and what they notice online
  - Adults showing curiosity, including watching or playing alongside children, so games are not treated as a secret or separate world
  - A clear understanding of personal information, including why chats should stay about the game and when to tell an adult
  - Agreed rules around spending, with children knowing when real money is involved and when permission is needed
  - Reassurance that worries should be shared, including exposure to upsetting content, mean behaviour or hate-based language
  - Confidence using block and report tools, so concerns can be addressed calmly and practically
  - Active use of safety settings, including age-appropriate controls, chat restrictions and parent account oversight
- More information can be found [here](#)
- Download an editable table of settings [here](#)

## Healthy mind, healthy body

Here is our draft vision for the above for children and families - please let us know your thoughts.

For our children, we work hard to model and talk about how to keep ourselves healthy in body and mind, without necessarily using the term 'mental health'. We share ideas about how to feel positive, how to recognise and change emotions, and how to regulate ourselves. We teach breathing in and out using the hand model, offer safe spaces to go to in order to calm down if needed and ask how our children are. We ask all our children if they have a trusted adult in school and home so that we know they have someone they can go to. We celebrate excellent examples of children taking positive steps for their wellbeing. For our families, we have an open door culture and we ask with genuine care if families are alright if we can see a change. We listen without judgement and we promote seeking support and signpost to services.

## Message from the Executive Headteacher....

We enjoyed a visit from our Trust this week, with Mr Payne being very positive about our super children and their excellent writing in particular. Children showed good learning behaviours and we were proud of them.

Just a reminder about Homework. We believe Homework is about regular practise of key skills that support your children's success in learning. Homework should not be a source of stress for families or children, it should be fun and easy to fit in to busy lives! Each day, children should do the following:

### Key Stage One (Reception to Year Two)

- \* Read their book and answer questions to show their understanding
- \* Do their phonics practise (either online using the videos or using the little phonics home book or any other resources you've been given in their book bags)
- \* Practise number bonds to 10 and 20 (eg 3 + 7, 5+15, 19+1 etc. and also the inverse - the other way round)

### Key Stage Two (Year Three to Year Six)

- \* Read their book and answer comprehension questions or re-tell the story to you or explain a paragraph
- \* Practice their spellings on Spelling Frame (if you don't have log-in details, please call the office)
- \* Practise their Multiplication and Division Tables on Tackling Tables (again, call the office if you don't have their log-in details)

If you need any help or support, please do ask - we're always happy to help.

## Friends of Sporle School (FOSS).....

If you have any ideas or suggestions to raise money for the school please speak to a member of FOSS on the playground. Alternatively, speak with a member of staff who can pass this on.

## Prayer for the Week....

Dear God,  
Thank you for providing the food we eat. It keeps us all healthy.

Amen

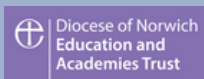
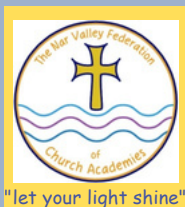
by Mrs Yule and Toby-James, Robins Class



Thank you as always for your support and partnership,

Head of School  
Sporle C of E Primary Academy

Executive Headteacher  
Nar Valley Federation of Church Academies  
Castle Acre, Narborough and Sporle C of E Primary Academy



**Sporle Newsletter for week ending  
16th January 2026**

The Nar Valley Federation of Church Academies

Executive Headteacher: Mrs Anne Neary  
Web: [www.narvalleyfederation.co.uk](http://www.narvalleyfederation.co.uk)



## Help with online safety::



The CEOP website, run by the National Crime Prevention agency, gives helpful advice about when and how to report your concern.

**<https://www.thinkuknow.co.uk/parents/Get-help/Reporting-an-incident/>**



**See these links for further information, games and tips:**

**[https://www.thinkuknow.co.uk/4\\_7/](https://www.thinkuknow.co.uk/4_7/)**  
**[https://www.thinkuknow.co.uk/8\\_10/](https://www.thinkuknow.co.uk/8_10/)**  
**<https://www.thinkuknow.co.uk/parents/>**