



YEAR 1/2 SQUIRRELS

Summer 1

Curriculum Newsletter



This half term our curriculum scheme is:
Queen Elizabeth I



ENGLISH - WRITING

Our first piece of writing will be a fact file about the Elizabethans. We will use history lessons to help inform our writing.

The second piece of writing that the children will be exploring is 'The Journey'. They will be writing their own version of this story.



ENGLISH - READING

The children will continue to make great progress with their RWI phonics and reading programme.

Some of our children have progressed to our reading comprehension group, learning to read longer texts and answer detailed questions.



MATHEMATICS

In Maths the Year 1's will be exploring length and height followed by mass and volume and starting multiplication and division.

Year 2 will be looking at fractions and time.



HISTORY

This term our enquiry question is: *What made Elizabeth I great?* We will look at her family, life before she was queen and life during her reign. We will explore different sources to help us answer our enquiry question.



SCIENCE

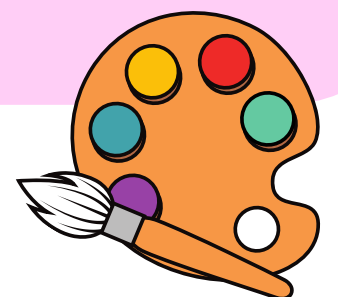
This term the children will be investigating Animals including Humans. Their enquiry question: *To identify classify and group animals based on their similarities and differences.*

They will be exploring animal groupings, learning the human senses and life cycles.



DT

In DT we will be learning about puppets, when and why they were invented and how to make one. We will follow the DT cycle of investigate, design, create and evaluate.



COMPUTING

In computing the children will be learning digital writing. They will be exploring using a keyboard and understanding how to delete, enter and type words onto a document.



RE

In RE the children will be answering the enquiry question: *Why do people have different views about the idea of God?*

They will be looking at Christianity, Islam and Hinduism and how they view their God, as well as Humanists.



MUSIC

In Music the children will continue exploring rhythm, pitch and improvisation. They will be exploring this through singing, composition and musical instruments.



PSHE

In Jigsaw the children will be looking at Relationships. This will include relationships with their families and friends and how to conquer their disagreements.

