



Sporle Newsletter for week ending 12th January 2024

The Nar Valley Federation of Church Academies

Executive Headteacher: Mrs Anne Neary
Web: www.narvalleyfederation.co.uk

Dear Parents and Carers,

It's the end of a fabulous first whole week back and already Christmas seems a distant memory. It always amazes me how quickly it seems to pass. The children have made a fabulous start back at school and have really impressed the teachers with everything they have remembered in their learning. We even managed to award lots of new reading badges on the first week back. Well done everyone. We'd also like to offer our welcome to Mrs Keeler who is teaching in the Robins class this term. On Monday, we will also welcome Miss Bateman to Robins class who is a trainee teacher and will be completing her teaching placement with us whilst Miss Watkins is on her second placement.

Upcoming Events

See Diary Dates for details.....

18th / 19th January

Aspens menu swap - Due to Census day we have swapped the choice of menus for the two days (see Diary Dates for information)

Active Kids festival at Lynnsport Y1/2

If your child is attending, you will have received a link

Drop in with Mrs Joplin!

This started up again on Friday 12th January. She looks forward to seeing you in the hall on a Friday after drop off.

Reminders and Information.....

We wanted to draw your attention again to the Sporle Relief in Need Charity who are able to offer financial assistance during times of need or hardship. If you think you or someone you know may benefit from this charity, please see the attached form and complete and send back to townfarmclerk@gmail.com

Drop In with Mrs Joplin

Look out for the signs on Fridays - please note, this may not take place every week.

Mrs Joplin really enjoyed having a few parents/carers in for a chat and a cuppa!

We practise two kinds of safety procedures termly, an evacuation drill, where we rehearse getting everyone out of the building rapidly and safely, and an invacuation drill, where we practise getting everyone to a particular place in the building. Our children do this silently and very sensibly - well done children.

PARKING AT THE SCHOOL - a polite reminder that the school car park is for staff and disabled access only. Please ensure you park at the bottom of the hill and walk to the school, thank you for your continued support

Attendance Awards.....

Class	%
Robins	93.55%
Woodpeckers	95.26%
Kingfishers	93.73%

Oh dear everyone - get better soon



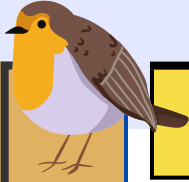
Please remember to be on time for school - children need to be in their seats at **8.40am**, learning. Every minute helps them and every minute is time lost from their learning and over time is a huge and needless disadvantage for them.



AWARDS

The Nar Valley Federation of Church Academies

Executive Headteacher: Mrs Anne Neary
Web: www.narvalleyfederation.co.uk







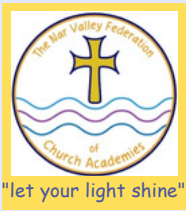
Robins Class

Award	Goes to...	For.....
Reader of the week	Mia	using her phonics to sound out words 
Writer of the week 	Gracie-Mae	trying really hard with letter formation
Mathematician of the week	Jennifer	a great explanation of tens and ones 
Shining Light 	Ethan	always being a good role model and for demonstrating our school values
Crew Award	Olivia	being a really good friend and showing kindness



Woodpeckers Class

Award	Goes to...	For.....
Reader of the week	Lennie	retrieving answers quickly and efficiently in his reading 
Writer of the week 	Nicholas	for using beautiful presentation and working hard in all his writing
Mathematician of the week	Teddy	for impressing Mrs Joplin with his focus on fractions 
Shining Light 	Amelia-Rose	for shining in her attitude, perseverance and kindness
Crew award	Lucy	for helping Mrs Henderson in class



AWARDS

The Nar Valley Federation of Church Academies



Kingfishers Class

Award	Goes to...	For.....
Reader of the week	Bella	Excellent reading responses in reading lessons 
Writer of the Week 	Kai	Noticeable and sustained improvements in writing
Mathematician of the week	Ralph	<i>Excellent and enthusiastic contributions to maths discussions</i> 
Let Your Light Shine	Bailey	Superb recall of previous learning in mathematics
Tackling Tables	Ralph Betty	<i>Blue Multiplication Purple Addition</i>
Shining Light 	Ronnie	Consistently demonstrating positive attitudes towards learning



Sporle Newsletter for week ending 12th January 2024

The Nar Valley Federation of Church Academies

Executive Headteacher: Mrs Anne Neary
Web: www.narvalleyfederation.co.uk

Safeguarding

Screen time:
Technology has benefits, and some screen time can have positive impact in terms of being able to socialise with children from different areas, the interaction with computer games can develop hand-eye coordination and teamwork and creativity skills can be enhanced.

However too much screen time has negative impact as follows:

- Sleep cycles are affected by blue light from screens, tricking our brain into thinking it is still daylight, making it difficult to sleep.
- Too much passive screen time could weaken communication and social skills.
- Some research found that children who spent more than two hours a day on screen-time activities scored lower on language and thinking tests.
- Screen-based entertainment increases central nervous system arousal, which can amplify anxiety.
- Using devices while sitting in one place reduces physical activity needed for a healthy lifestyle.

More info here:
<https://www.internetmatters.org/issues/screen-time/learn-about-it/#:~:text=Potential%20risks%20of%20overexposure%20to%20screens&text=Too%20much%20passive%20screen%20time,on%20language%20and%20thinking%20tests.>

Message from the Executive Headteacher...



Parents/Carers' Forum:
Thank you to everyone who came along. There was a lot of very positive feedback, so thank you, with families happy about the range of clubs and lovely family events.

Suggestions made were to send reminders for events, so we have actioned that.

We hope to see lots of families at our next event; your thoughts and ideas are always welcome and we want to know any issues at all so that we can work on them for you and try and resolve them.

We'll be sending out our main questionnaire this term so please look out for that too.

Many thanks for your support.

Friends of Sporle School (FOSS).....



We are lucky to have the support of FOSS.

Please remember that we have a range of second-hand uniform in the school. If you are requiring some, please let the office know your needs and for a small donation, we may be able to help.

Prayer for the Week....



Dear Lord,

We thank you for keeping us safe in the holidays.

Amen

by Maddie and Piper

Thank you as always for your support and partnership,

Head of School
Sporle C of E Primary Academy

Executive Headteacher
Nar Valley Federation of Church Academies
Castle Acre, Narborough and Sporle C of E Primary Academy